

# 27 OXFORD STREET

## TYPICAL INDICATIVE SPACE PLAN

Office 1,705 sq ft / 158 sq m



22 Open Plan Desks



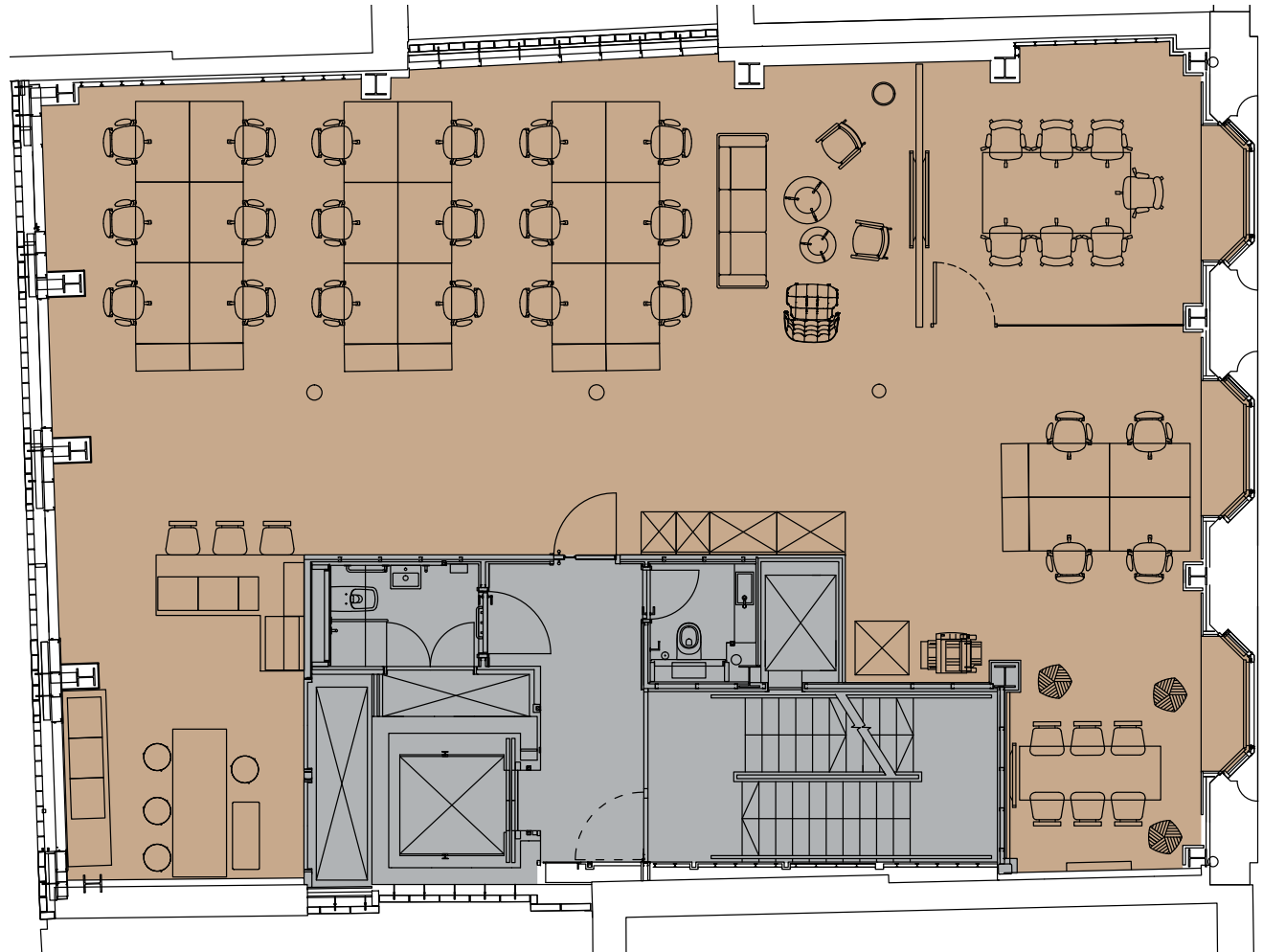
6 x  
hot desks



1 x  
Meeting Room



Kitchenette /  
breakout area



OXFORD STREET

● Office  
● Core

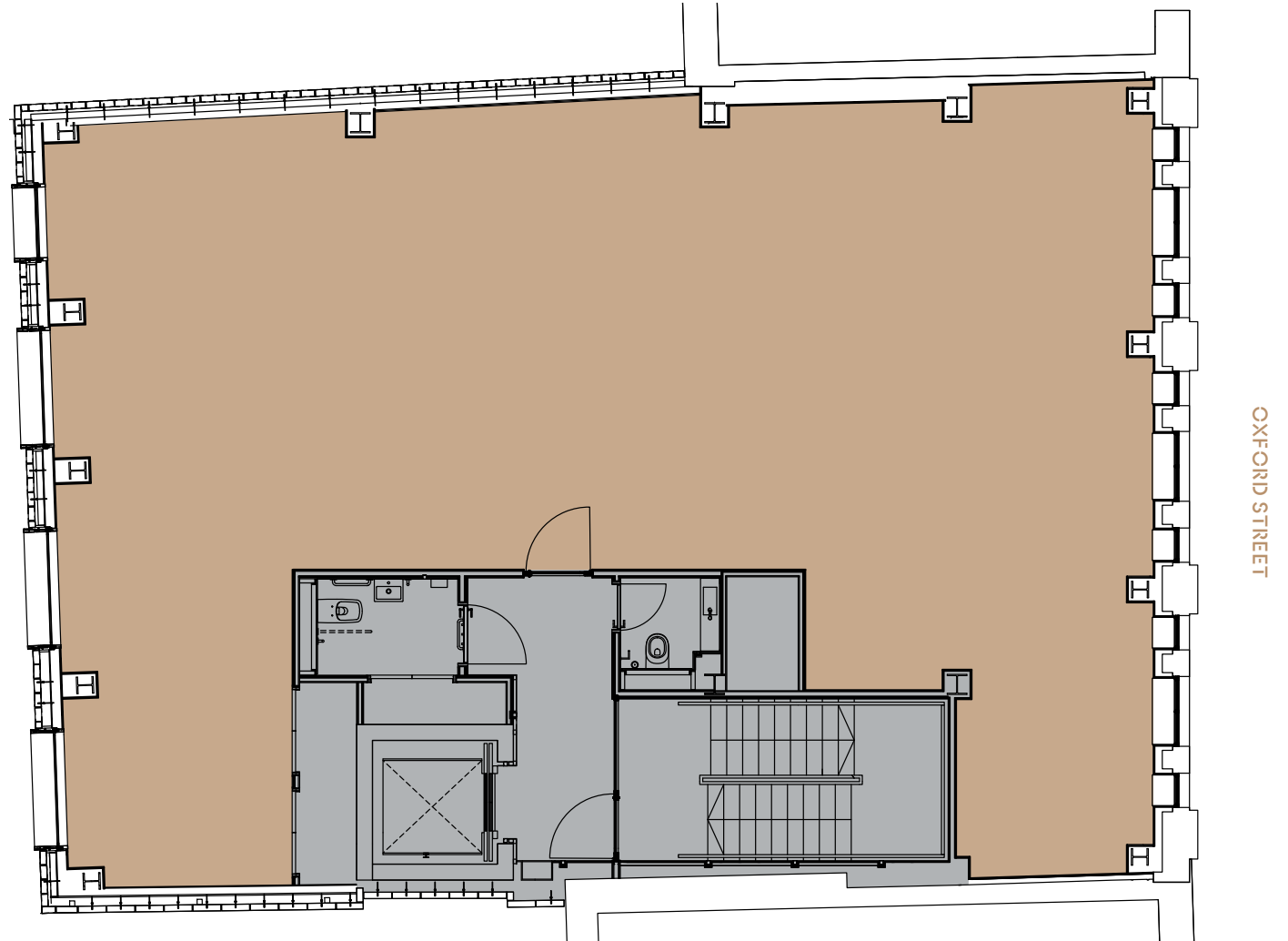


For indicative purposes only. Not to scale.

# 27 OXFORD STREET

## FIFTH

Office 1,705 sq ft / 158 sq m



- Office
- Core



For indicative purposes only. Not to scale.

# 27 OXFORD STREET

## 7TH FLOOR INDICATIVE SPACE PLAN

Office 1,047 sq ft / 97 sq m



12 Open Plan Desks



1 x 4 person  
Meeting Room



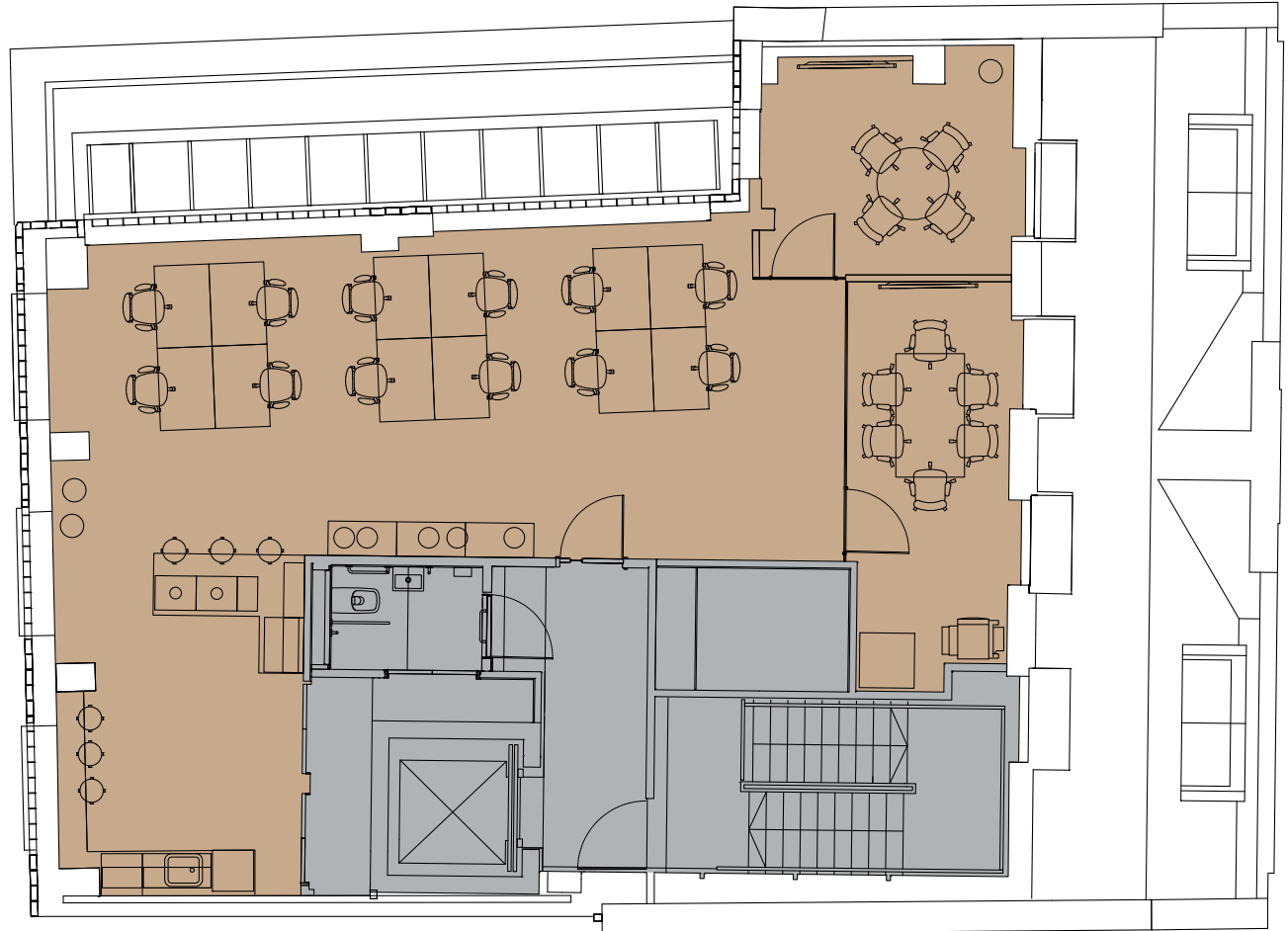
1 x 6 person  
Meeting Room



Kitchenette /  
breakout area



For indicative purposes only. Not to scale.

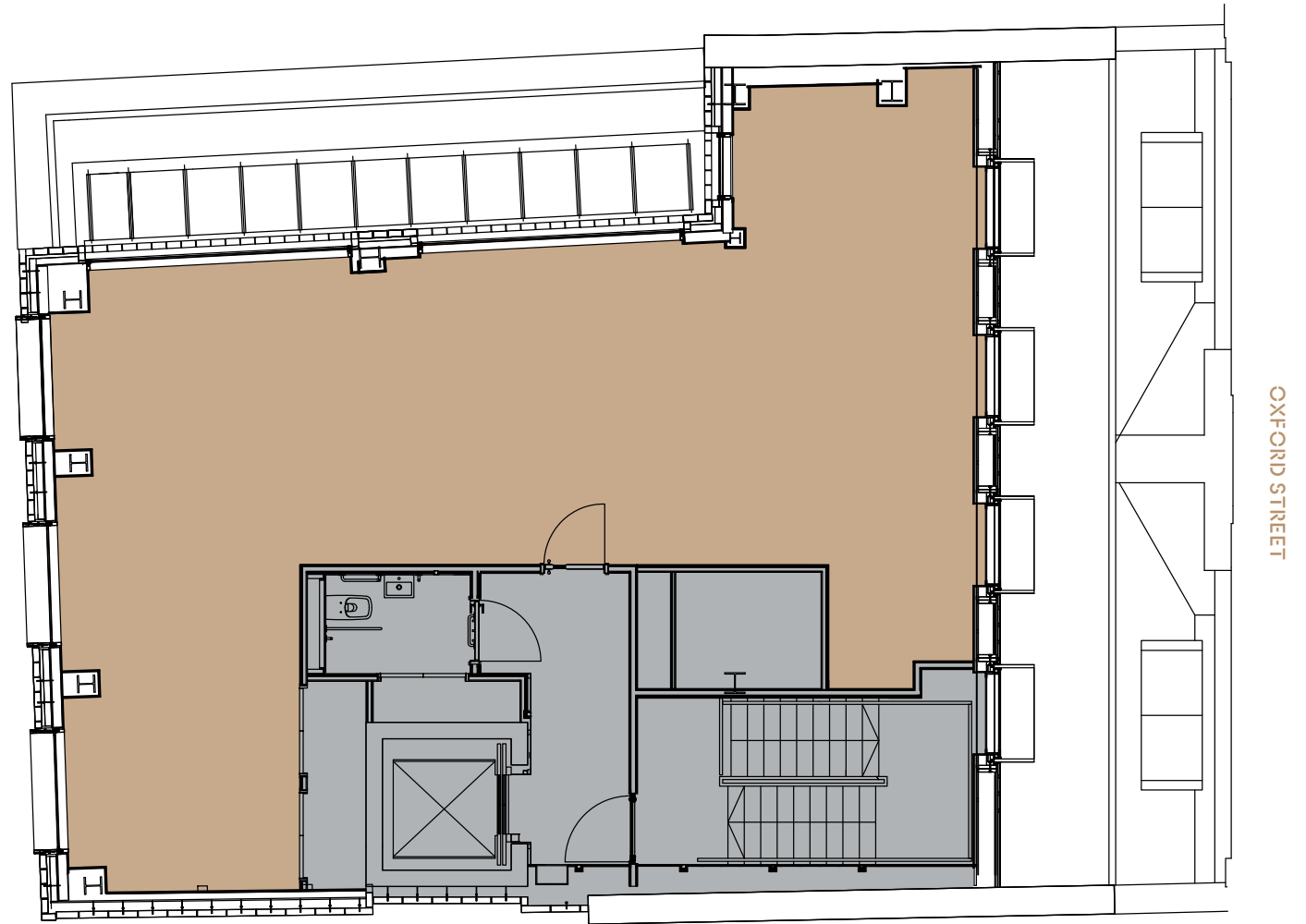


OXFORD STREET

# 27 OXFORD STREET

## SEVENTH

Office 1,047 sq ft / 97 sq m



- Office
- Core



For indicative purposes only. Not to scale.